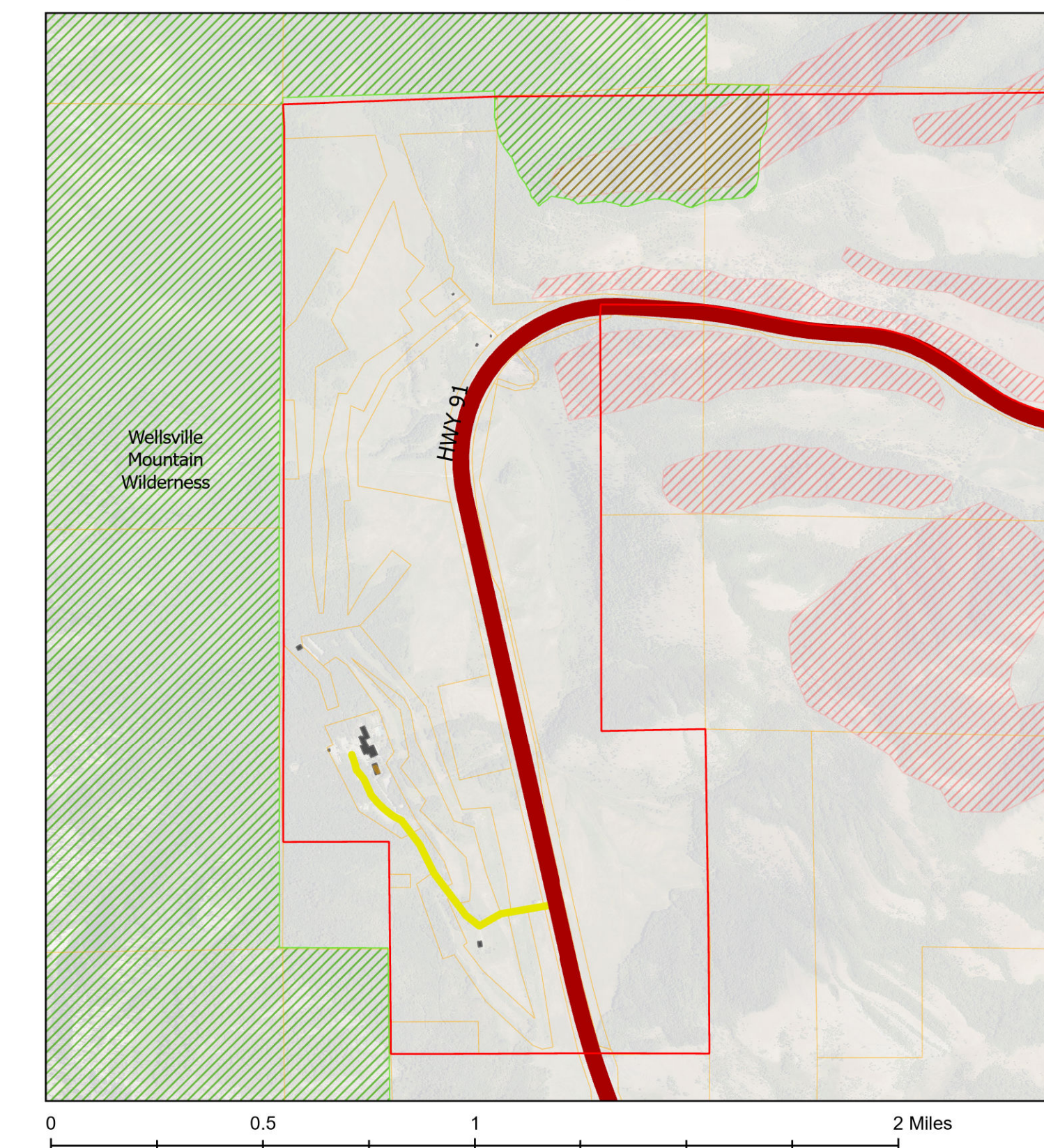


# Wellsville

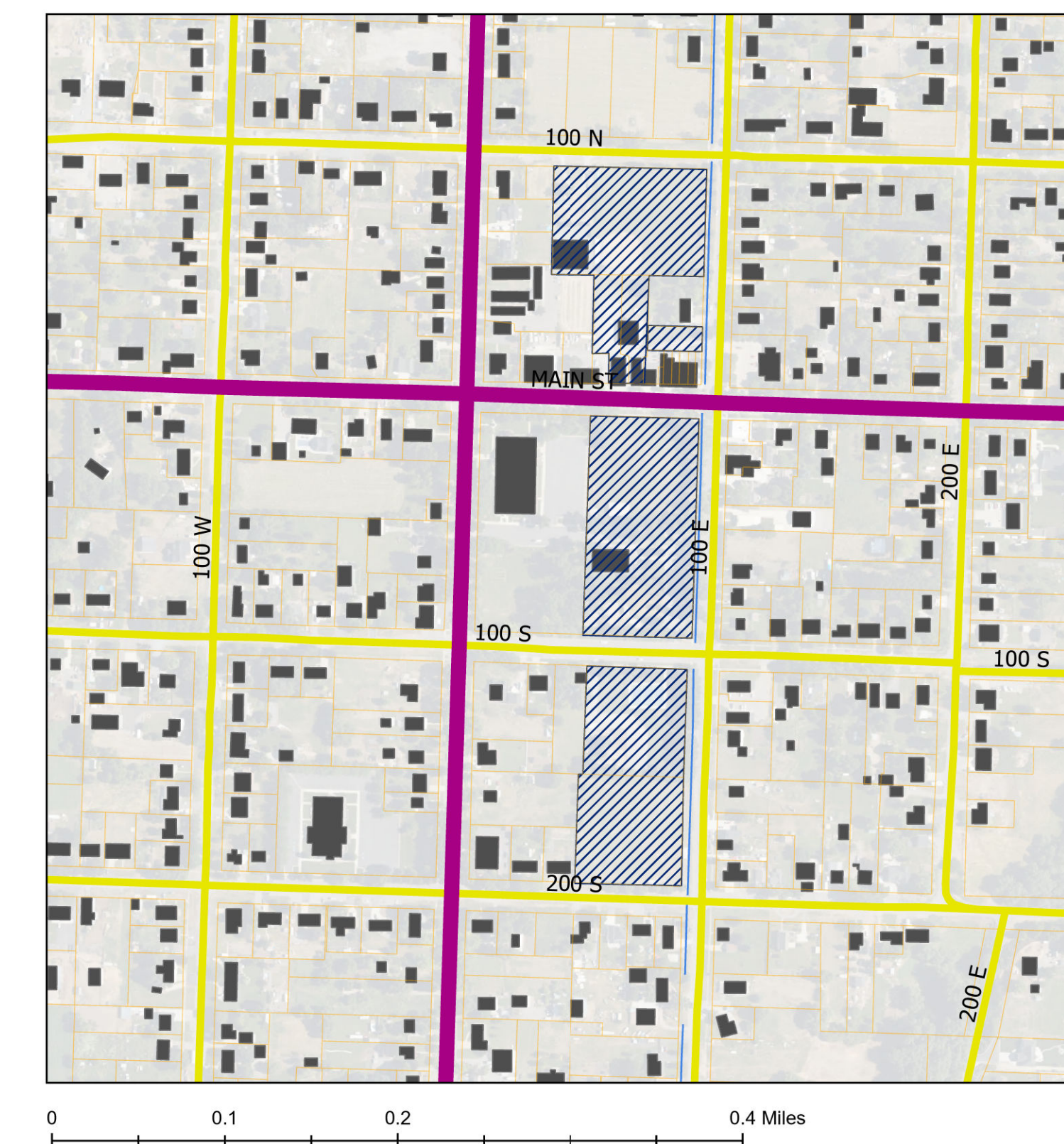
## Transportation Draft

- ▬ Wellsville City Annexation
- ▬ City Boundaries
- ▬ Enhanced Ped/Bike Crossing
- Existing Roads
- ▬ Local
- ▬ Collector
- ▬ Arterial
- ▬ Highway
- Proposed Roads
- ▬ Proposed Local
- ▬ Proposed Collector
- ▬ Proposed Arterial

### Wellsville Canyon



### Town Square



### Highway



A major regional roadway designed to move vehicles efficiently over longer distances. Highways typically have higher speeds, limited access points, and serve as key connections between communities and regional destinations.

### Arterial



High-capacity roadways that often connect major street centers and highways. Designed with the intent to carry high volumes of traffic over longer distances.

### Collector



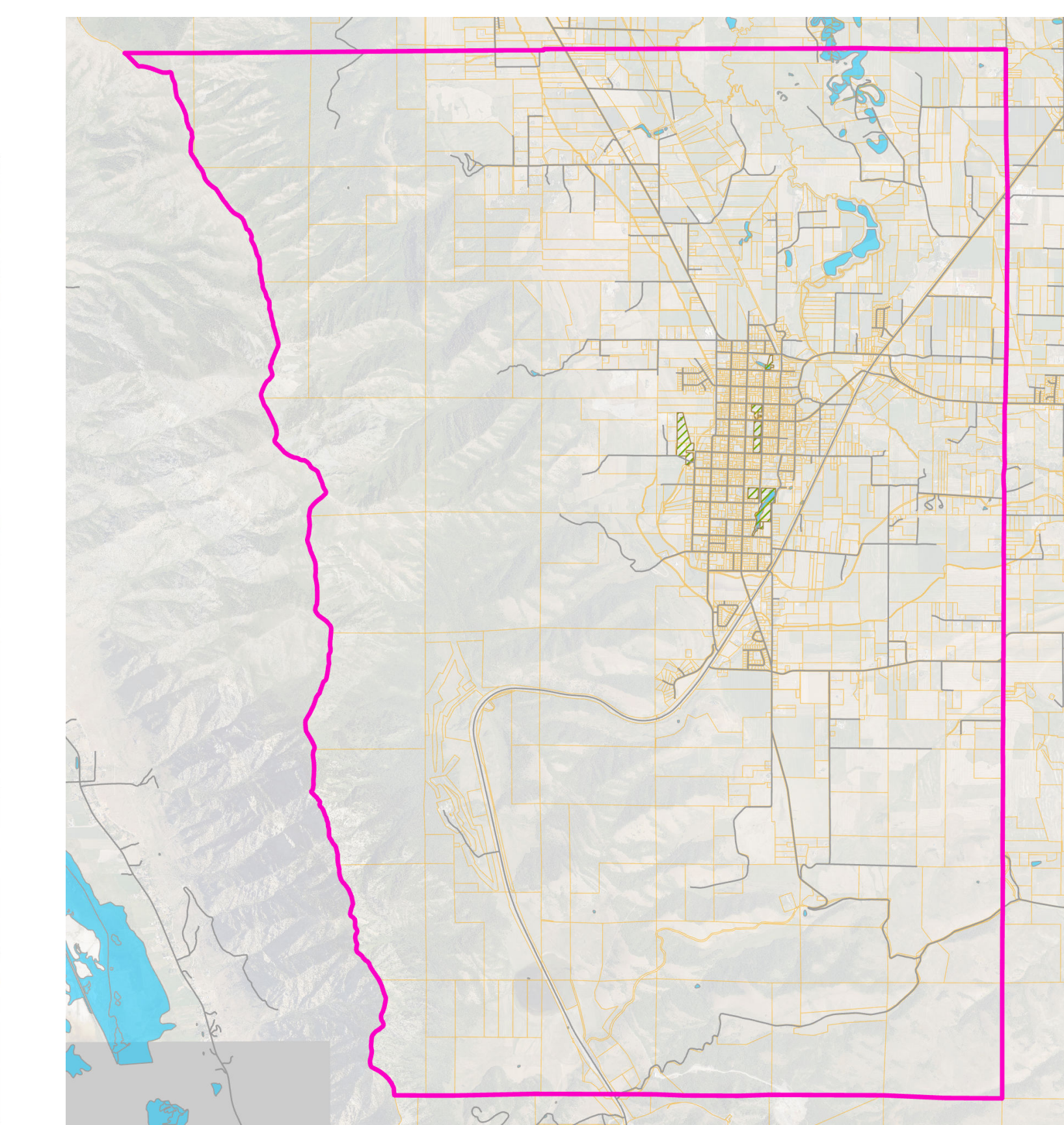
Roadways that connect local streets to highways and arterials, balancing traffic movement and property access. Collector roads help distribute traffic from neighborhoods while supporting safe travel for vehicles, pedestrians, and cyclists.

### Local



Lower-speed streets that primarily provide access to homes, businesses, and local destinations. Local roads prioritize neighborhood circulation, safety, and compatibility with surrounding land uses.

### Annexation Boundary



Please Provide Feedback!

