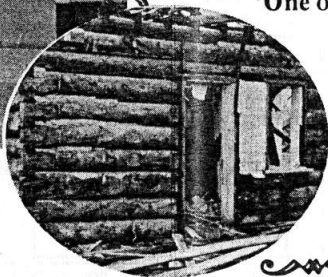
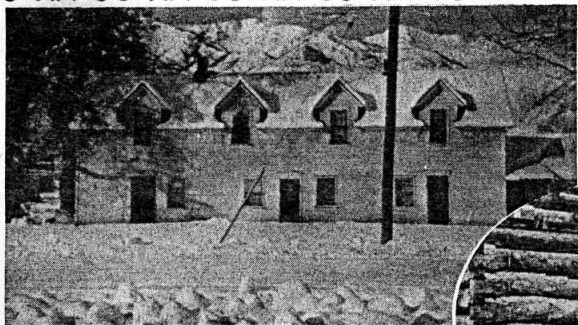


Bishop William H. Maughan polygamy home,
late 1880's.



One of the original log cabins in the Fort, belonged
to Peter or William H. Maughan

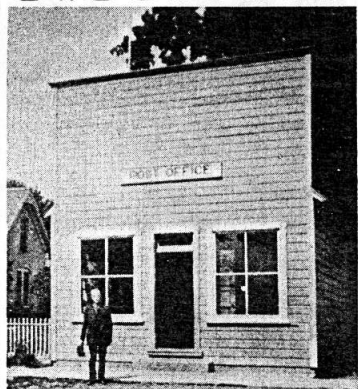
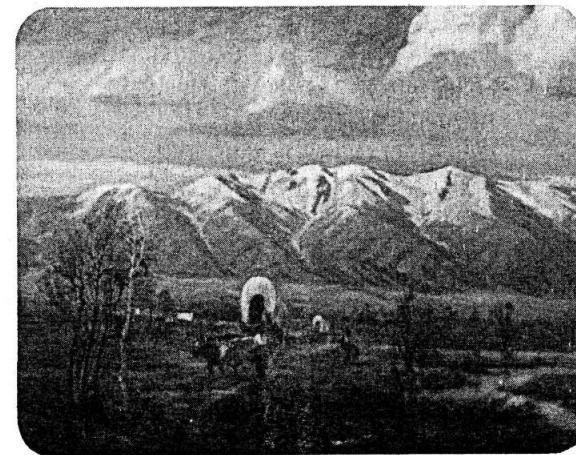
Second Co-op store, Main and First East.
Built before turn of century.



WELLSVILLE, UTAH

FIRST PERMANENT SETTLEMENT IN CACHE VALLEY

SEPTEMBER 15, 1856



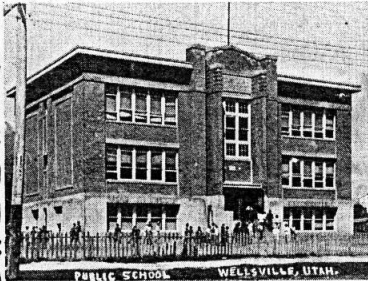
Early
Post
Office

Central
School
built
about
1890-1900.

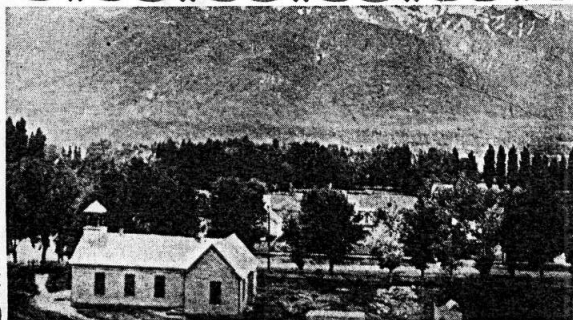


First
Church built
S/W corner out-
side of Fort.
1866.

Floradell
School
built
1912



Pavilion
October 23,
1905



HISTORIC SITES TOUR

SEPTEMBER 1, 1986

LEGEND

HISTORIC SITES TOUR

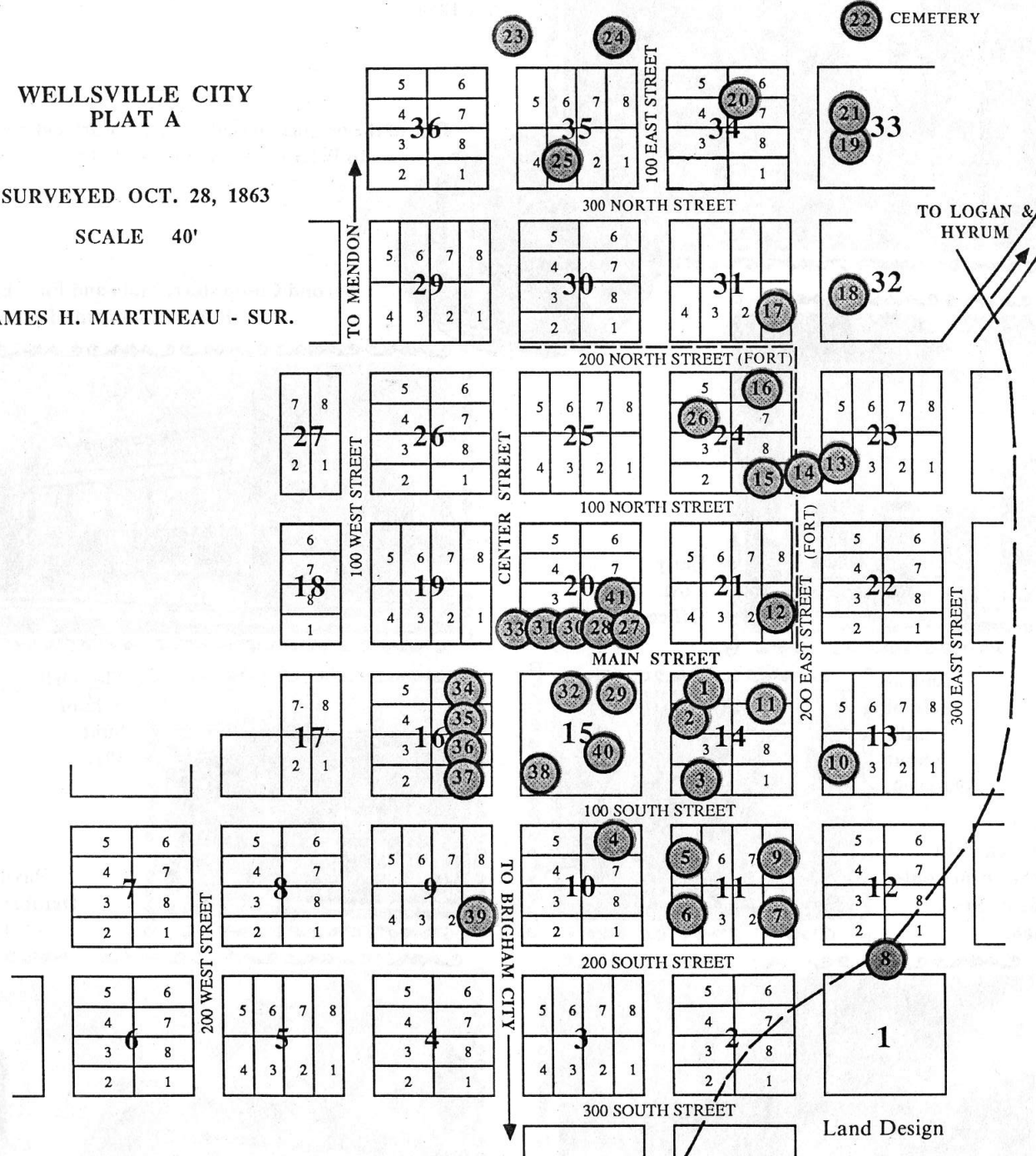
1. CO-OP
2. HOWELL - THEURER HOME
3. ZIAL RIGGS HOME
4. CENTRAL SCHOOL
5. CITY HALL
6. PRESBYTERIAN CHURCH & SCHOOL
7. LIME KILN
8. FIRST ENCAMPMENT
9. JOHN H. BANKHEAD ROCK HOME
10. REUBEN SMITH HOME
11. SITE OF EARLY TITHING OFFICE
12. WILLIAM H. MAUGHAN HOME
13. SITE OF FIRST CHURCH & SCHOOL HOUSE
14. SITE OF PUBLIC WELL
15. PIONEER HOTEL
16. HEBER BANKHEAD ROCK HOME
17. JAMES HOLT HASLAM HOME & BLACKSMITH SHOP
18. DEAKIN LOG CABIN
19. ANDERSON LUMBER STORE
20. AMES SAW MILL SITE
21. TRAIN STATION
22. CEMETERY
23. WELLSVILLE SPRING
24. HANSEN DAIRY
25. MILLER BRICK YARD
26. TIMOTHY PARKINSON HOME
27. HENDRY CLOTHING STORE
28. WELLSVILLE STATE BANK
29. FLORADELL SCHOOL
30. BRENCHLEY BLACKSMITH SHOP
31. TRAIN STATION
32. WELLSVILLE THEATER
33. WILLIE MAUGHAN STORE
34. POST OFFICE
35. RELIEF SOCIETY HOUSE
36. LEISHMAN STORE/SALISBURY BARN
37. FARMERS' MERCANTILE STORE/BLACKSMITH SHOP
38. EARLY CHURCH (OPERA HOUSE)
39. SECOND WARD CHURCH
40. TABERNACLE
41. PAVILION

WELLSVILLE CITY
PLAT A

SURVEYED OCT. 28, 1863

SCALE 40'

JAMES H. MARTINEAU - SUR.



Land Design